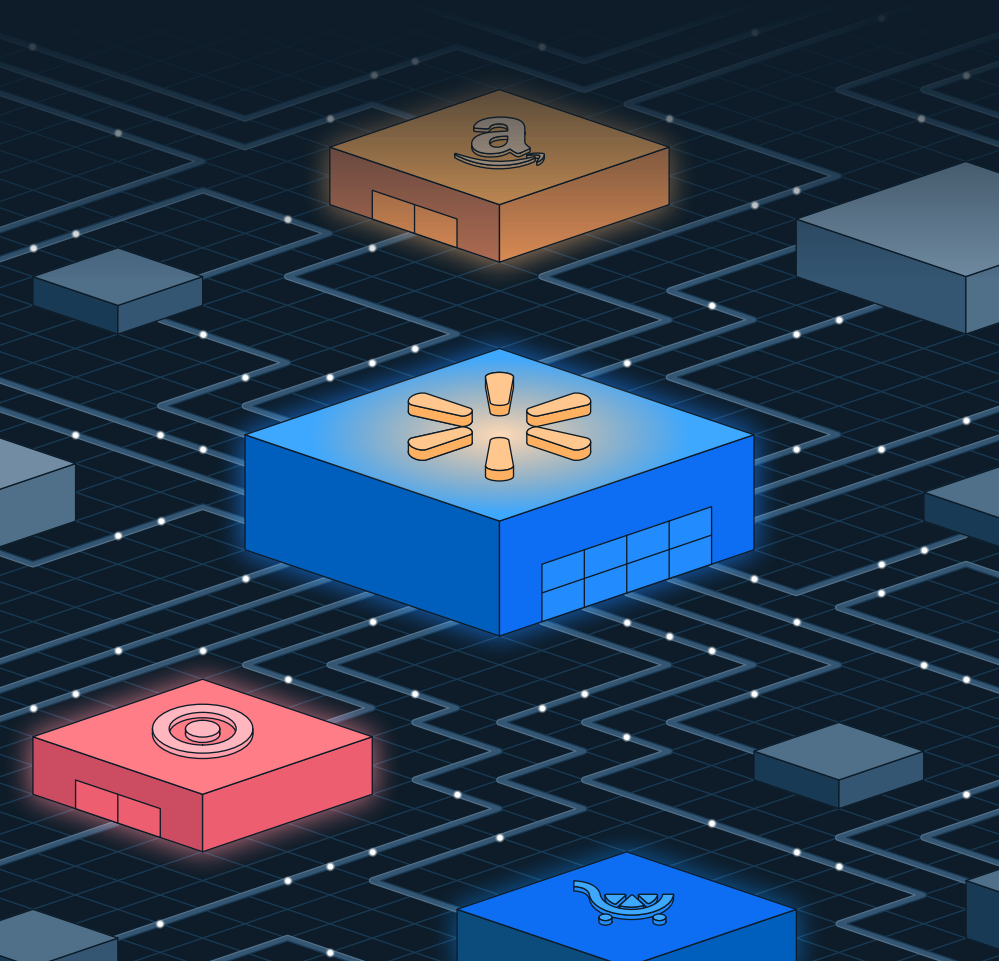


# EDI for Retail Supply Chains

**Cheat Sheet**





# What is EDI?

**Electronic Data Interchange (EDI)** was designed for the purpose of creating a common language of documents for interactions between businesses. There are many iterations of this code system used in a variety of settings today, not just for codifying interchange in the business sector.

EDI providers are software companies that use its codex as a means of making communication between companies (in the context of this eBook, for example, the relationship between a supplier and a retailer) as free and smooth as possible.

EDI documents contain a minimum quantity of required information, like a rubric of essential components. The failure of EDI is usually connected to inaccurate or incomplete information in the document. It is the work of EDI providers to minimize the instances of these miscommunications.

For a thorough glossary of common terms used in EDI, bookmark [this article](#) to keep it on hand for future reference.

EDI document types take the form of the letters “EDI” followed by a three-digit number between 100 and 999, but not every number is used regularly in the world of retail supply chains, even if each has a meaningful designation for most systems that use it. These numbers essentially signify the type of information being communicated in the document, but it will obviously not communicate all of what is contained within a given document.

## **What Are the Most Prevalent EDI Document Types for Retail Suppliers?**

Some document types are more relevant to retail supply chains than others. The list below is composed of some of the most prevalent document types in the retail industry. Knowing what these are and how they function is fundamental to supplier success.

Retailers have unique subsets of documents that they use in their own receiving process. What makes EDI so important for the retail supply chain world is precisely that it is needed to facilitate clear communication between supplier and buyer. This process involves a careful understanding of each retailer's inner workings.

## **EDI 810: Invoice**

This transaction document is used for billing goods and services provided. The data in these documents varies widely depending on the goods/services being purchased. In the context of retail supply chains, however, they always include:

- Invoice number
- Date of the invoice
- Services/items rendered
- Date that the items shipped out on
- Payment terms

More often than not, in the retail industry, the sender is the supplier, and the receiver is the retailer. The retailer is the one being invoiced by the supplier for the cost of goods.

## **EDI 846: Inventory Inquiry**

EDI 846s are designed to communicate inventory information between parties, usually, in the case of retail supply chains, between manufacturers, suppliers, and retailers. A variety of quantities can be communicated through this transaction document: quantities on hand, committed quantities, on-order quantities, and back order quantities, to name just a few.

## **EDI 850: Purchase Order**

This transaction document contains all of the materials requested by the buyer (in this context, usually the merchant at the retailer).

Purchase Orders (POs) contain important details within merely the items requested, namely, the item description, UPC item or case code, unit prices, payment terms, discounts, and requested delivery dates, all of which are important pieces of information to keep on hand for records.

This transaction set is not the same as an edit or change to a purchase order nor the acknowledgment of receipt of a purchase order (see EDI 855).

## **EDI 855: Purchase Order Acknowledgment**

This transaction document communicates the seller's acknowledgment of a buyer's purchase order. In the case of vendor-generated orders, this document can also be used as a notification of an order creation.

- **Outbound Benefit:** The customer is more likely to buy knowing they will receive the correct quantity on time.
- **Inbound Benefit:** Knowing promptly about short/late shipments allows time to demand better performance or find another vendor.

## **EDI 856: Ship Notice/Manifest (a.k.a. "Advance Ship Notice" or ASN)**

This transaction document is one of the more commonly used transactions in the retail industry, and it is therefore at the heart of compliance policies and protocols (see [EDI 856: Ship Notice/Manifest—Explaining EDI](#) or ["ASN Not Downloaded" Defect](#) for more context).

These are essential to successfully communicating the contents of a shipment to a buyer. They often include:

- Carrier information
- Description of products and their respective quantities
- Tracking numbers
- Purchase order numbers
- Barcodes for each container/carton

- Types of packaging used
- Configuration of items in the shipping container/ transportation equipment

## **EDI 875: Grocery Products Purchase Order**

The grocery industry has its own form of POs with its own EDI code. This transaction set is used by grocery wholesalers and retailers. These are different from the EDI 850 general merchandise POs because grocery POs do not need the level of detail that EDI 850s need.

## **EDI 879: Price Information Advice**

This document type communicates price information, especially price changes, between sellers and buyers. Pricing is a difficult and fraught factor in the retail industry, and it usually causes quite a bit of miscommunication.

EDI 879s are important for clarifying these issues in the compliance and/or dispute process surrounding pricing. Post audits that retailers send out due to pricing discrepancies will need to be disputed, at least in part, using these.

## **EDI 940: Warehouse Shipping Order**

This transaction document functions as a means of communicating between the sellers/suppliers and third-party logistics providers (3PLs) as a request for shipment of goods from a supplier's warehouse to a buyer's location (usually a DC).

These almost always include the following:

- Warehouse order details (timing and quantities)
- The PO number associated
- The destination address (buyer's location)

- Contact information for the receivers
- And more information related to the order

## **EDI 997: Functional Acknowledgment**

EDI 997s function almost as a meta-transaction in data interchange, to acknowledge the acceptance of a group of or an individual EDI transaction.

For example, the “ASN Not Downloaded” defect in the Supplier Quality Excellence Program (SQEP) depends on the receipt of the ASN. If an EDI 997 has been sent from Walmart to the supplier confirming the receipt of the ASN (the EDI 856), it can be used to file a dispute of the fine.

EDI 997s are used for a variety of other transactions as well.

## **EDI Field Limitations**

It is important to be aware of the [EDI Field Limitations](#) when filling out the various document types. These limitations are important for avoiding problems with EDI providers and miscommunication across retail supply chains.

Each retailer, however, has their own sets of valid codes and values, and a document that may be valid for one retailer may not be for another one. For example, Amazon has stopped accepting PODs/BOLs as legitimate proof documentation for disputing a shortage deduction, whereas, at most other retailers, such documents are essential for winning back invalid shortage deductions.



# EDI Document Types Relevant to Retail, Categorized by Industry Topic

The following is not an exhaustive list of all possible EDI document types. This list does not contain some of the categories that wouldn't be as relevant to the retail world like "Government," "Healthcare," and "Insurance." Since EDI is used for much more than just B2B communication in the retail space, the following list should not be considered comprehensive.



## **Transportation and Logistics**

- **EDI 104:** Air Shipment Information
- **EDI 106:** Motor Carrier Rate Proposal
- **EDI 107:** Request for Motor Carrier Rate Proposal
- **EDI 108:** Response to a Motor Carrier Rate Proposal
- **EDI 109:** Vessel Content Details
- **EDI 110:** Air Freight Details and Invoice
- **EDI 120:** Vehicle Shipping Order
- **EDI 121:** Vehicle Service
- **EDI 125:** Multilevel Railcar Load Details
- **EDI 126:** Vehicle Application Advice
- **EDI 127:** Vehicle Buying Order
- **EDI 128:** Dealer Information
- **EDI 129:** Vehicle Carrier Rate Update
- **EDI 160:** Transportation Automatic Equipment Identification
- **EDI 161:** Train Sheet
- **EDI 163:** Transportation Appointment Schedule Information
- **EDI 204:** Motor Carrier Load Tender
- **EDI 210:** Motor Carrier Freight Details and Invoice
- **EDI 211:** Motor Carrier Bill of Lading
- **EDI 212:** Motor Carrier Delivery Trailer Manifest
- **EDI 213:** Motor Carrier Shipment Status Inquiry
- **EDI 214:** Transportation Carrier Ship. Status Message
- **EDI 215:** Motor Carrier Pick-up Manifest
- **EDI 216:** Motor Carrier Shipment Pick-up Notification

- **EDI 217:** Motor Carrier Loading and Route Guide
- **EDI 219:** Logistics Service Request
- **EDI 220:** Logistics Service Response
- **EDI 222:** Cartage Work Assignment
- **EDI 223:** Consolidators Freight Bill and Invoice
- **EDI 224:** Motor Carrier Summary Freight Bill Manifest
- **EDI 225:** Response to a Cartage Work Assignment
- **EDI 227:** Trailer Usage Report
- **EDI 228:** Equipment Inspection Report
- **EDI 240:** Motor Carrier Package Status
- **EDI 250:** Purchase Order Shipment Management Document
- **EDI 300:** Reservation (Booking Request) (Ocean)
- **EDI 301:** Confirmation (Ocean)
- **EDI 303:** Booking Cancellation (Ocean)
- **EDI 304:** Shipping Instructions
- **EDI 309:** Customs Manifest
- **EDI 310:** Freight Receipt and Invoice (Ocean)
- **EDI 311:** Canada Customs Information
- **EDI 312:** Arrival Notice (Ocean)
- **EDI 313:** Shipment Status Inquiry (Ocean)
- **EDI 315:** Status Details (Ocean)
- **EDI 317:** Delivery/Pickup Order
- **EDI 319:** Terminal Information
- **EDI 322:** Terminal Operations and Intermodal Ramp Activity
- **EDI 323:** Vessel Schedule and Itinerary (Ocean)
- **EDI 324:** Vessel Stow Plan (Ocean)

- **EDI 325:** Consolidation of Goods in Container
- **EDI 326:** Consignment Summary List
- **EDI 350:** Customs Status Information
- **EDI 352:** U.S. Customs Carrier General Order Status
- **EDI 353:** Customs Events Advisory Details
- **EDI 354:** U.S. Customs Auto. Manifest Archive Status
- **EDI 355:** U.S. Customs Acceptance/Rejection
- **EDI 356:** U.S. Customs Permit to Transfer Request
- **EDI 357:** U.S. Customs In-Bond Information
- **EDI 358:** Customs Consist Information
- **EDI 359:** Customs Customer Profile Management
- **EDI 361:** Carrier Interchange Agreement (Ocean)
- **EDI 404:** Rail Carrier Shipment Information
- **EDI 410:** Rail Carrier Freight Details and Invoice
- **EDI 412:** Trailer or Container Repair Billing
- **EDI 414:** Rail Carhire Settlements
- **EDI 417:** Rail Carrier Waybill Interchange
- **EDI 418:** Rail Advance Interchange Consist
- **EDI 419:** Advance Car Disposition
- **EDI 420:** Car Handling Information
- **EDI 421:** Estimated Time of Arrival & Car Scheduling
- **EDI 422:** Equipment Order
- **EDI 423:** Rail Industrial Switch List
- **EDI 424:** Rail Carrier Services Settlement
- **EDI 425:** Rail Waybill Request
- **EDI 426:** Rail Revenue Waybill

- **EDI 429:** Railroad Retirement Activity
- **EDI 431:** Railroad Station Master File
- **EDI 432:** Rail Deprescription
- **EDI 433:** Railroad Reciprocal Switch File
- **EDI 434:** Railroad Mark Register Update Activity
- **EDI 435:** Standard Transportation Commodity Code Master
- **EDI 436:** Locomotive Information
- **EDI 437:** Railroad Junctions & Interchanges Activity
- **EDI 440:** Shipment Weights
- **EDI 451:** Railroad Event Report
- **EDI 452:** Railroad Problem Log Inquiry or Advice
- **EDI 453:** Railroad Service Commitment Advice
- **EDI 455:** Railroad Parameter Trace Registration
- **EDI 456:** Railroad Equipment Inquiry or Advice
- **EDI 460:** Railroad Price Distribution Request or Response
- **EDI 463:** Rail Rate Reply
- **EDI 466:** Rate Request
- **EDI 468:** Rate Docket Journal Log
- **EDI 470:** Railroad Clearance
- **EDI 475:** Rail Route File Maintenance
- **EDI 485:** Ratemaking Action
- **EDI 486:** Rate Docket Expiration
- **EDI 490:** Rate Group Definition
- **EDI 492:** Miscellaneous Rates
- **EDI 494:** Rail Scale Rates
- **EDI 601:** U.S. Customs Export Shipment Information

- **EDI 603:** Transportation Equipment Registration
- **EDI 715:** Intermodal Group Loading Plan
- **EDI 854:** Shipment Delivery Discrepancy Info.
- **EDI 858:** Shipment Information
- **EDI 859:** Freight Invoice
- **EDI 920:** Loss or Damage Claim: Gen. Commodities
- **EDI 924:** Loss or Damage Claim: Motor Vehicle
- **EDI 925:** Claim Tracer
- **EDI 926:** Claim Status Report and Tracer Reply
- **EDI 928:** Automotive Inspection Detail
- **EDI 980:** Functional Group Totals
- **EDI 990:** Response to a Load Tender
- **EDI 998:** Set Cancellation

## **Manufacturing and Retail**

- **EDI 101:** Name and Address Lists
- **EDI 140:** Product Registration
- **EDI 141:** Product Service Claim Response
- **EDI 142:** Product Service Claim
- **EDI 143:** Product Service Notification
- **EDI 159:** Motion Picture Booking Confirmation
- **EDI 170:** Revenue Receipts Statement
- **EDI 180:** Return Merchandise Authorization & Notification
- **EDI 244:** Product Source Information
- **EDI 290:** Cooperative Advertising Agreements
- **EDI 503:** Pricing History

- **EDI 504:** Clauses and Provisions
- **EDI 620:** Excavation Communication
- **EDI 625:** Well Information
- **EDI 753:** Request For Routing Instructions
- **EDI 754:** Routing Instructions
- **EDI 816:** Organizational Relationships
- **EDI 818:** Commission Sales Report
- **EDI 830:** Planning Schedule w/ Release Capability
- **EDI 832:** Price/Sales Catalog
- **EDI 840:** Request for Quotation
- **EDI 841:** Specifications/Technical Information
- **EDI 842:** Nonconformance Report
- **EDI 843:** Response to Request for Quotation
- **EDI 845:** Price Authorization Acknowledgment/Status
- **EDI 846:** Inventory Inquiry/Advice
- **EDI 847:** Material Claim
- **EDI 848:** Material Safety Data Sheet
- **EDI 850:** Purchase Order
- **EDI 851:** Asset Schedule
- **EDI 852:** Product Activity Data
- **EDI 853:** Routing and Carrier Instruction
- **EDI 855:** Purchase Order Acknowledgment
- **EDI 856:** Ship Notice/Manifest (Advance Ship Notice or ASN)
- **EDI 857:** Shipment and Billing Notice
- **EDI 860:** Purchase Order Change Request: Buyer Initiated
- **EDI 861:** Receiving Advice/Acceptance Certificate

- **EDI 862:** Shipping Schedule
- **EDI 863:** Report of Test Results
- **EDI 865:** Purchase Order Change Acknowledgment/  
Request: Seller Initiated
- **EDI 866:** Production Sequence
- **EDI 867:** Product Transfer and Resale Report
- **EDI 869:** Order Status Inquiry
- **EDI 870:** Order Status Report
- **EDI 873:** Commodity Movement Services
- **EDI 874:** Commodity Movement Services Response
- **EDI 875:** Grocery Products Purchase Order
- **EDI 876:** Grocery Products Purchase Order Change
- **EDI 877:** Manufacturer Coupon Family Code Structure
- **EDI 878:** Product Authorization/De-authorization
- **EDI 879:** Price Information
- **EDI 881:** Manufacturer Coupon Redemption Detail
- **EDI 882:** Direct Store Delivery Summary Information
- **EDI 883:** Market Development Fund Allocation
- **EDI 884:** Market Development Fund Settlement
- **EDI 885:** Retail Account Characteristics
- **EDI 886:** Customer Call Reporting
- **EDI 887:** Coupon Notification
- **EDI 888:** Item Maintenance
- **EDI 889:** Promotion Announcement
- **EDI 890:** Contract & Rebate Management
- **EDI 891:** Deduction Research Report

- **EDI 893:** Item Information Request
- **EDI 894:** Delivery/Return Base Record
- **EDI 895:** Delivery/Return Acknowledgment or Adjustment
- **EDI 896:** Product Dimension Maintenance
- **EDI 940:** Warehouse Shipping Order
- **EDI 943:** Warehouse Stock Transfer Shipment Advice
- **EDI 944:** Warehouse Stock Transfer Receipt Advice
- **EDI 945:** Warehouse Shipping Advice
- **EDI 947:** Warehouse Inventory Adjustment Advice

## **Finance**

- **EDI 130:** Student Educational Record (Transcript)
- **EDI 131:** Student Educational Record (Transcript) Acknowledgment
- **EDI 132:** Human Resource Information
- **EDI 133:** Educational Institution Record
- **EDI 135:** Student Aid Origination Record
- **EDI 138:** Education Testing and Prospect Request and Report
- **EDI 139:** Student Loan Guarantee Result
- **EDI 144:** Student Loan Transfer and Status Verification
- **EDI 146:** Request for Student Educational Record (Transcript)
- **EDI 147:** Response to Request for Student Educational Record (Transcript)
- **EDI 155:** Business Credit Report
- **EDI 188:** Educational Course Inventory
- **EDI 189:** Application for Admission to Educational Institutions



- **EDI 190:** Student Enrollment Verification
- **EDI 191:** Student Loan Pre-Claims and Claims
- **EDI 197:** Real Estate Title Evidence
- **EDI 198:** Loan Verification Information
- **EDI 199:** Real Estate Settlement Information
- **EDI 200:** Mortgage Credit Report
- **EDI 201:** Residential Loan Application
- **EDI 202:** Secondary Mortgage Market Loan Delivery
- **EDI 203:** Secondary Mortgage Market Investor Report
- **EDI 205:** Mortgage Note
- **EDI 206:** Real Estate Inspection
- **EDI 245:** Real Estate Tax Service Response
- **EDI 248:** Account Assignment/Inquiry & Service/Status
- **EDI 259:** Residential Mortgage Insurance Explanation of Benefits
- **EDI 260:** Application for Mortgage Insurance Benefits
- **EDI 261:** Real Estate Information Request
- **EDI 262:** Real Estate Information Report
- **EDI 263:** Residential Mortgage Insurance Application Response
- **EDI 264:** Mortgage Loan Default Status
- **EDI 265:** Real Estate Title Insurance Services Order
- **EDI 266:** Mortgage or Property Record Change Notification
- **EDI 810:** Invoice
- **EDI 811:** Consolidated Service Invoice/Statement
- **EDI 812:** Credit/Debit Adjustment

- **EDI 814:** General Request, Response, or Confirmation
- **EDI 819:** Joint Interest Billing and Operating Expense Statement
- **EDI 820:** Payment Order/Remittance Advice
- **EDI 821:** Financial Information Reporting
- **EDI 822:** Account Analysis
- **EDI 823:** Lockbox
- **EDI 824:** Application Advice
- **EDI 827:** Financial Return Notice
- **EDI 828:** Debit Authorization
- **EDI 829:** Payment Cancellation Request
- **EDI 831:** Application Control Totals
- **EDI 833:** Mortgage Credit Report Order
- **EDI 844:** Product Transfer Account Adjustment
- **EDI 849:** Response to Product Transfer Account Adjustment
- **EDI 872:** Residential Mortgage Insurance Application
- **EDI 880:** Grocery Products Invoice

## **Communications and Controls**

- **EDI 102:** Associated Data
- **EDI 242:** Data Status Tracking
- **EDI 815:** Cryptographic Service Message
- **EDI 864:** Text Message
- **EDI 868:** Electronic Form Structure
- **EDI 993:** Secured Receipt or Acknowledgment

- **EDI 997:** Functional Acknowledgment
- **EDI 999:** Implementation Acknowledgment

## **Prevalent Message Codes**

- **APERAK:** Application error and acknowledgment message
- **DELFOR:** Delivery schedule message
- **DELJIT:** Delivery just in time message
- **DESADV:** Despatch advice message
- **INVOIC:** Invoice message
- **INVRPT:** Inventory report message
- **ORDERS:** Purchase order message
- **RECADV:** Receiving advice message

Further Reading

## SupplierWiki & SupplyPike

### SupplierWiki

For a more in-depth exploration of [EDI for Suppliers](#), see this group of articles on the subject.

Stay ahead of SQEP compliance at Walmart by downloading our [SQEP Handbook](#), an exhaustive resource on the first three Phases of the program.

### SupplyPike

SupplyPike helps suppliers maximize their cash flow and prevent retailer fines by providing oversight and insight into supply chain efficiency. Fight deductions, meet compliance goals, and analyze root cause with our software for Walmart, Amazon, Target, and Kroger.

[Sign up for a meeting](#) with the team to see if our solution is right for your retail business.